



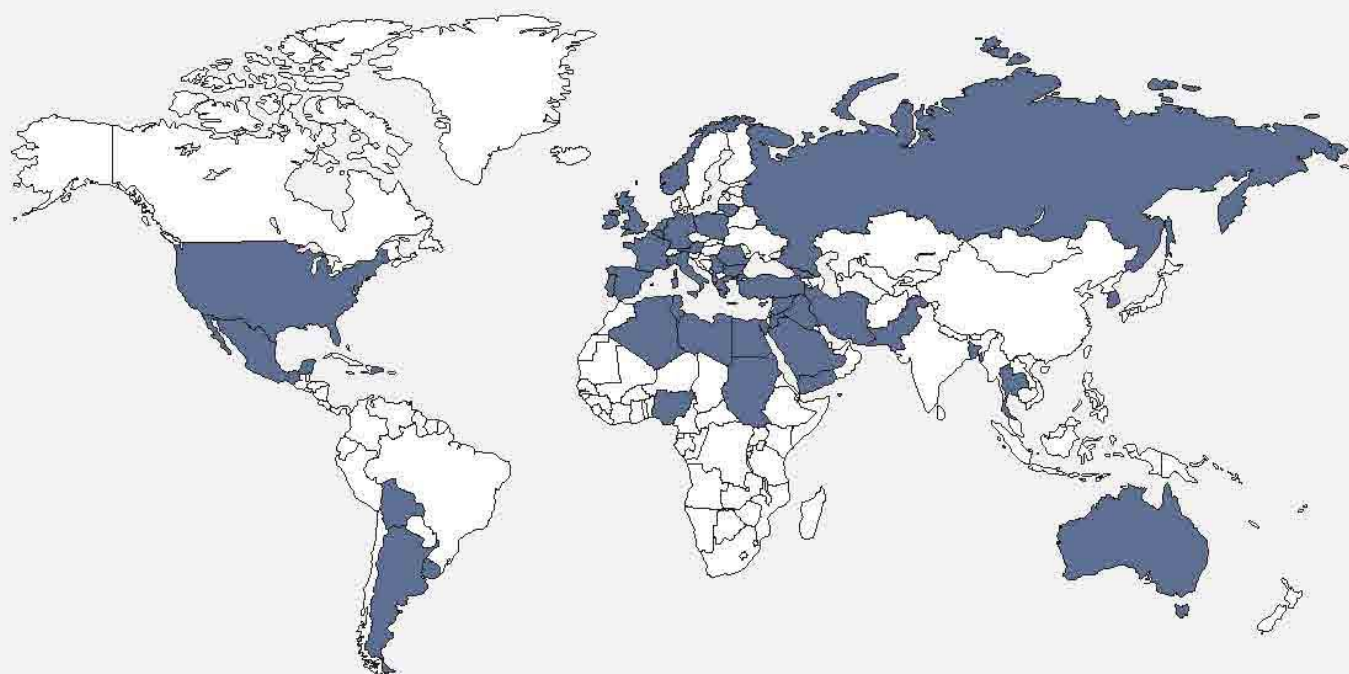
Pans & Non-stick Coatings



Our Pans & Non-stick Coatings Around The World



Pans & Non-stick Coatings



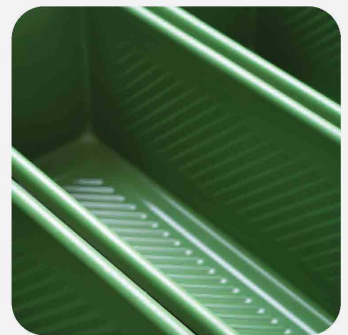
ALBENIA - ALGERIA - ARGENTINA - AUSTRALIA - AUSTRIA - BANGLADESH - BELGIUM - BOLIVIA - BULGARIA -
CYPRUS - DENMARK - DOMINICAN REPUBLIC - EGYPT - FRANCE - GEORGIA - GERMANY - GREECE -
IRAN - IRAQ - ITALY - JORDAN - KUWAIT - LIBYA - LITHUANIA - MEXICO - THE NETHERLANDS -
NEW CALEDONIA - NIGERIA - NORWAY - PAKISTAN - POLAND - PORTUGAL - QATAR - ROMANIA -
RUSSIA FEDERATION - SAUDI ARABIA - SERBIA - SOUTH KOREA - SUDAN - SYRIA -
THAILAND - TUNUSIA - UNITED ARAB EMIRATES - UNITED KINGDOM - UNITED STATES OF AMERICA - URUGUAY - YEMEN

Turbel

Pans & Non-stick Coatings



*Cake
Pans*



*Toast
Pans*



*Hamburger &
Sandwich
Bun Trays*



*Flat & Other
Trays*

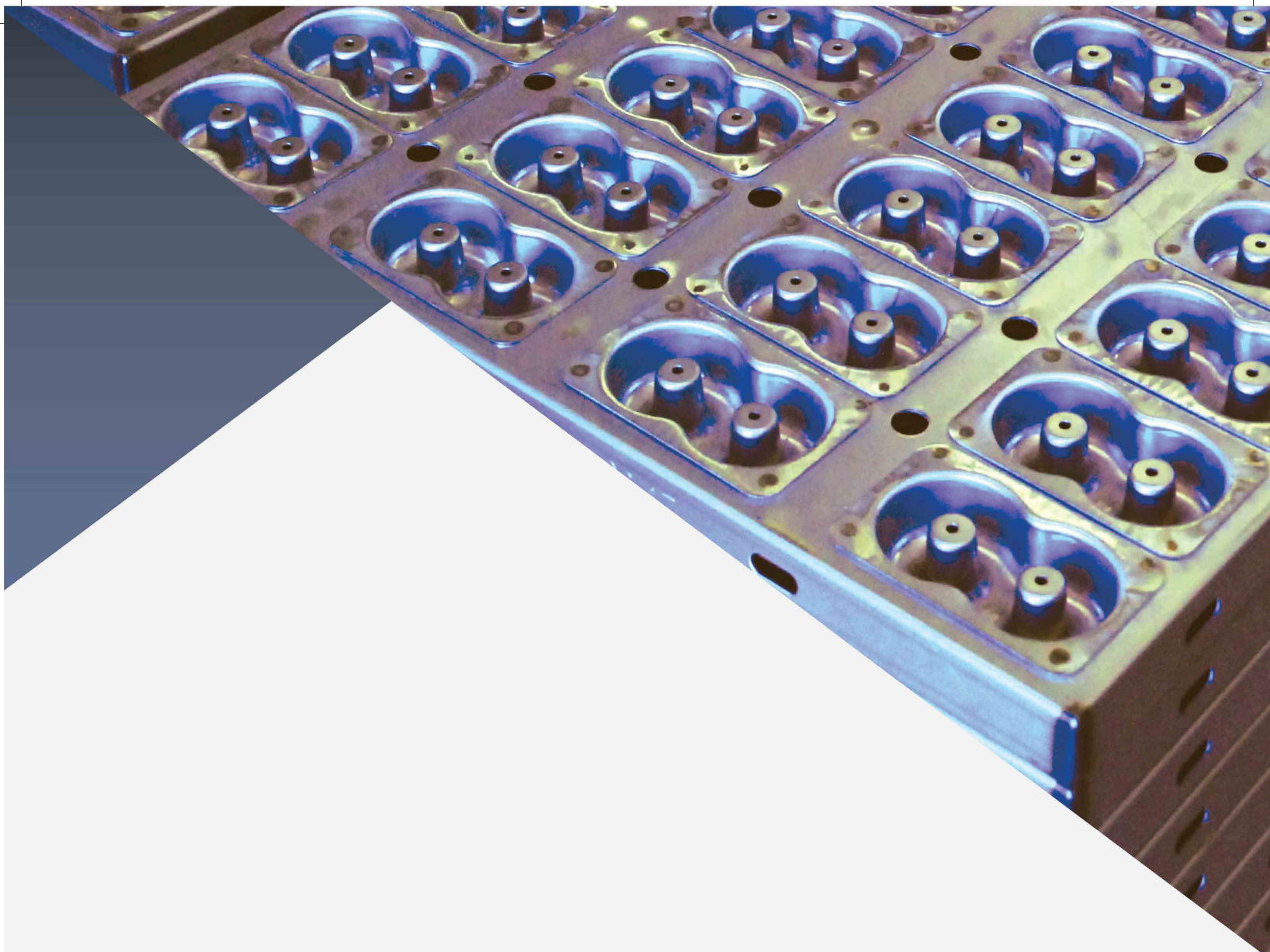
Cake Pans

- *We have our own high-tech tooling shop in company structure and therefore we provide a full package of tailor-made service starting from the design phase.*
- *We work with minimum tolerances with our products which will perfectly fit to your automatic lines.*
- *We aim the fastest delivery to our customers with our high-tech equipment such as Lazer, Punch machines and Robotic welding.*
- *By investing a lot to R&D, we increase our efficiency in production and aim to improve customer satisfaction every single day.*

Materials Used

- *Aluminized Steel*
- *Mild Steel*
- *Blue Steel*



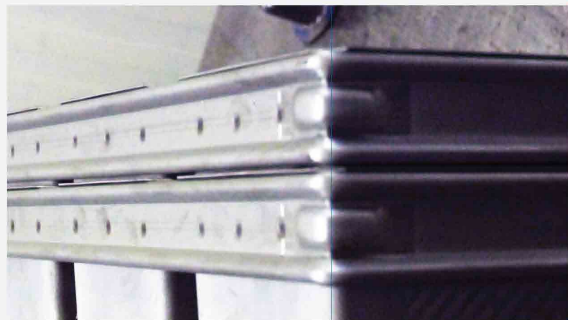


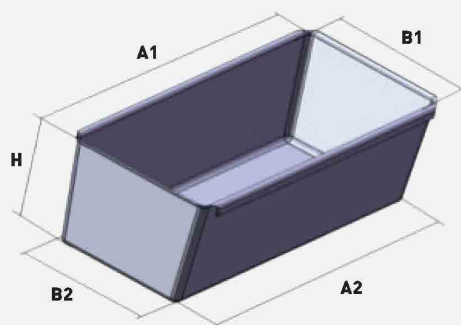
Toast Pans

- We use 0.6, 0.8, 0.9 and 1 mm aluminized steel by standard
- We have many types of toast tray moulds in different dimensions. Please contact to share your needs. Even if we don't have it, we can make it for you in our own tooling department.

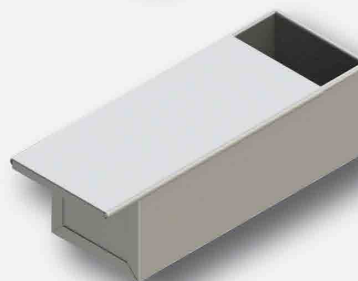
Materials Used

- Aluminized Steel
- Mild Steel
- Blue Steel



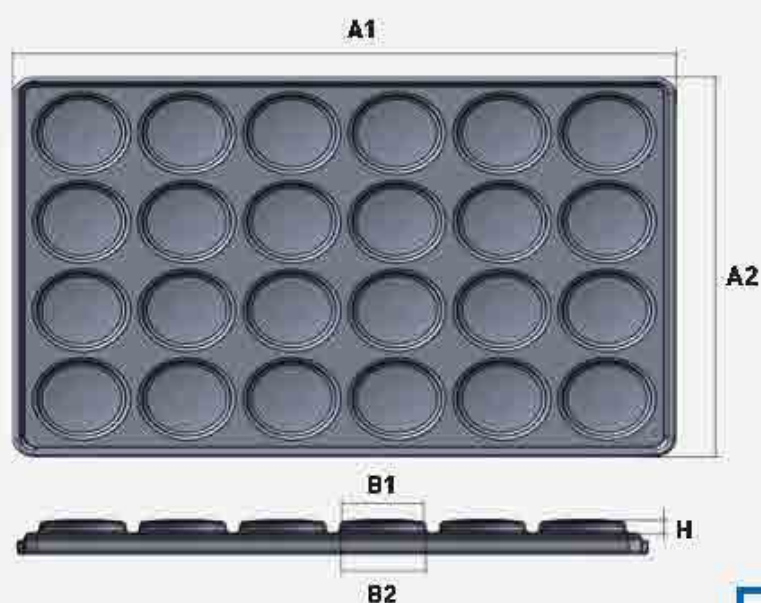


	A1	B1	A2	B2	H
1	140	100	129	89	100
2	155	85	138	68	55
3	175	85	171	81	68
4	176	95	172	91	85
5	180	110	170	105	110
6	195	145	190	135	75
7	208	100	200	89	100
8	215	95	205	95	78
9	220	105	215	95	95
10	224	110	222	108	90
11	230	102	225	100	75
12	240	96	234	90	76
13	260	110	257	95	95
14	265	107	256	102	105
15	270	110	265	100	75
16	272	100	268	93	95
17	274	105	268	98	92
18	274	120	268	110	120
19	280	110	273	98	55
20	282	110	273	98	65
21	284	111	272	100	70
22	284	114	272	104	60
23	285	120	275	110	112
24	300	105	295	100	100
25	300	105	297	101	100
26	300	123	295	118	120
27	305	110	293	100	110
28	307	124	300	117	120
29	312	115	303	98	70
30	320	120	313	113	120
31	320	110	312	105	115
32	325	105	317	97	95
33	380	116	370	108	127
34	605	71	600	66	85
35	750	50	748	48	50

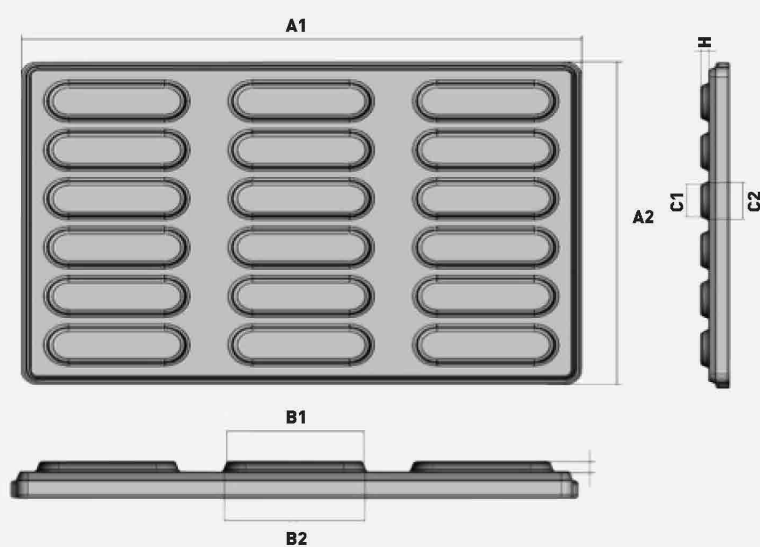


Hamburger & Sandwich Pans

- We use 0.6, 0.8, 0.9 and 1 mm aluminized steel by standard
- Please contact for our available mould dimensions



	A2	A1	B2	B1	H
1	500	740	Φ100	Φ98	17.25
2	500	740	Φ114	Φ113	17.25
3	500	740	Φ127	Φ126	16
4	500	740	Φ80	Φ70	9
5	500	740	Φ120	Φ115	22
6	600	800	Φ127	Φ119	16
7	600	800	Φ114.5	Φ113	17.25
8	610	880	Φ127	Φ121	19



	A1	A2	B1	B2	C1	C2	H
1	500	740	182	178	55	53	10
2	500	740	195	195	60	60	9
3	500	740	205	205	70	70	9
4	500	740	137	127	70	60	13
5	500	740	115	115	42	42	10
6	500	740	175	149.5	64	44	15
7	500	740	146	50	146	50	10
8	500	800	195	183	71	62	15
9	736	520	178	148	67	43	15,5

Flat & Other Trays

Flat Trays

- Upon your request, we can provide perforated or non-perforated flat trays
- Our standard radius in perforated trays are 2 or 3 mm. Upon request we can provide special dimensions.
- Standardized dimensions are 40x60 cm and 60x80 cm. Please contact for other special dimension.

Materials Used

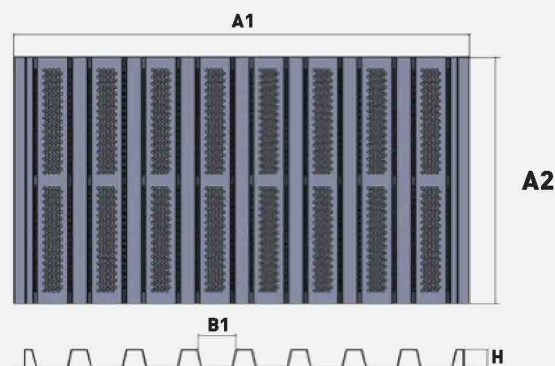
- Aluminium
- Stainless Steel
- Aluminized Steel

Baguette Trays

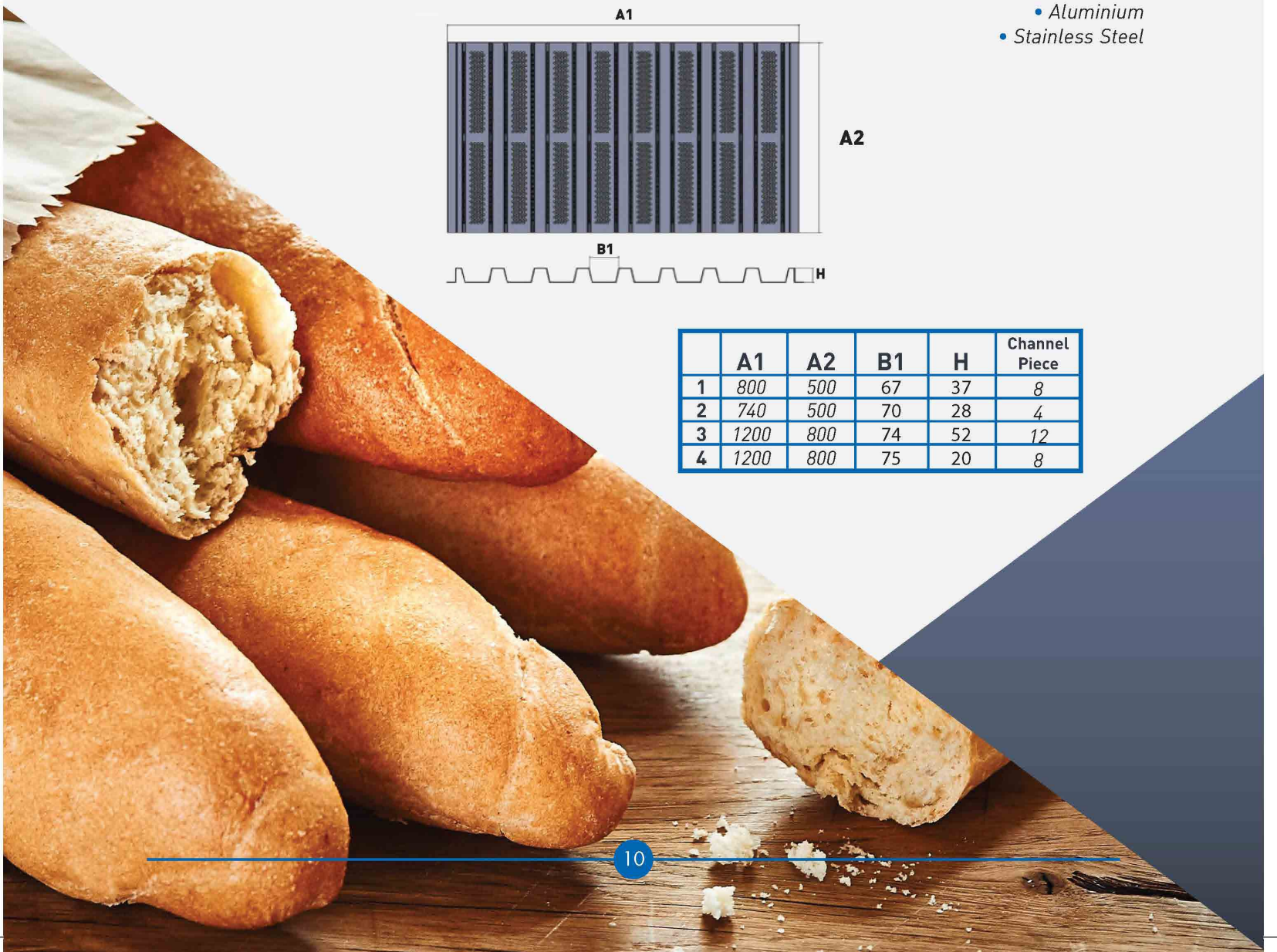
- We use stainless steel frames for the trays that are used in automatic lines.
- Standardized diameter is 2mm in perforation but upon request, we can provide different dimensions .
- For easy stockpiling we can share the solutions that are developed by our R&D team.

Materials Used

- Aluminium
- Stainless Steel



	A1	A2	B1	H	Channel Piece
1	800	500	67	37	8
2	740	500	70	28	4
3	1200	800	74	52	12
4	1200	800	75	20	8



Coatings

Industrial coatings for trays, moulds and pans help to create:

- Non-stickness
- Easiness to clean
- Healthier environment
- Less production and maintenance costs
- Easiness to depan
- Excellent heat transmission
- Production procedures which endures +/- 270° and humidity



What Turbel®Coatings offer you?

- Maximum durability of coatings by applying our know-how
- Higher number of cycles in your production, being Improved continuously by our high-tech R&D Department
- Compliance with all world wide food graders; FDA/USDA/BGA

What we offer you, *more..* ?

- Deciding on tailor-made coating types for your own production conditions.
- Satisfied customer relationships with our specially given priority to after-sale services.
- Serving with fastest delivery times with best quality and competitive prices



Fluoropolymers

Property Comparison

Property	PTFE	FEP	PFA	ETFE
Non-Stick	Exc.	Exc.	Exc.	Fair
Heat Resist.	260° C+	200° C	260° C	150° C
Hardness	60D	55D	60D+	75D
Salt Spray	Fair	Exc.	Exc.	Exc.
Abrasion Resistance	Fair	Good	Very Good	Exc.



Pans & Non-stick Coatings